

# Loading Symbol Files

---

## Application Note



---

### **FLIR Commercial Systems**

70 Castilian Drive

Goleta, CA 93117

Phone: +1.805.964.9797

[www.flir.com](http://www.flir.com)

Document Number: 102-PS242-100-10

Version: 100

Issue Date: October 2011

## Table of Contents

1.0	Document.....	3
1.1	Revision History .....	3
1.2	Scope.....	3
2.0	Requirements: .....	4
3.0	Procedure .....	4

## Table of Figures

Figure 1:	FLIR Camera Controller GUI – Camera Connection Window .....	4
Figure 2:	FLIR Camera Controller GUI – Advanced Tab .....	5
Figure 3:	Load PCF File .....	6

## 1.0 Document

### 1.1 Revision History

Version	Date	Comments
010	10/14/2011	Initial Draft

### 1.2 Scope

This document describes the procedure to load symbology files into a Tau camera. This allows you to remove zoom icons or return to factory defaults.

**Note:** This document is general to describe the procedure of loading symbols with PCF files. Please ensure that the correct files are loaded into your camera.

The FLIR website will have the newest version of this document as well as offer access to many other supplemental resources: <http://www.flir.com/cvs/cores/resources/>

Here is a sample of some of the resources that can be found:

Document Title	Document Number	Description
Tau Quick Start Guide	102-PS242-01	Quick Start Guide for first-time use
FLIR Camera Controller GUI User's Guide	102-PS242-02	Detailed Descriptions for functions and adjustments for FLIR cameras using the FLIR Camera Controller GUI
Tau 2 Product Specification	102-PS242-40	Product specification and feature description
Tau 2 Electrical IDD	102-PS242-41	Written for Electrical Engineers to have all necessary information to interface to a Tau 2 camera
Tau 2/Quark Software IDD	102-PS242-42	Written for Software Engineers to have all necessary information for serial control of Tau 2 and Quark
Assorted Mechanical Drawings and Models	Various	There are drawings and 3D models for various camera configurations for mechanical integration
Application Notes	Various	Written for Systems Engineers and general users of advanced features such as Gain Calibration, Supplemental FFC Calibration, NVFFC Calibration, Camera Link, On-Screen Symbology, AGC/DDE explanation, Camera Mounting, Spectral Response, Optical Interface for lens design, and others.

There is also a large amount of information in the Frequently Asked Questions (FAQ) section on the FLIR website: <http://www.flir.com/cvs/cores/knowledgebase/>. Additionally, a FLIR Applications Engineer can be contacted at 888.747.FLIR (888.747.3547).

## 2.0 Requirements:

This procedure requires access to symbol files that must be loaded into the camera. Contact a FLIR representative for more information about accessing these files.

- PCF File
- Hex File
- FLIR Camera Controller GUI
- Connection to Tau Camera via VPC module or other means

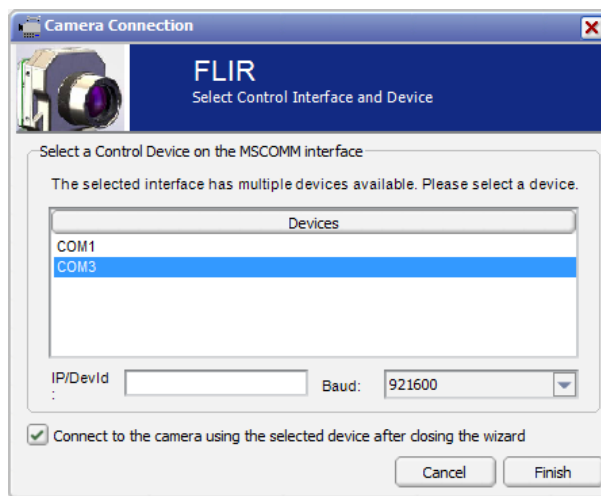
## 3.0 Procedure

Copy the PCF file and the Hex file to the same directory on your computer. The PCF file is a script that tells the camera to load the Hex file into a certain location in the camera’s memory.

The FLIR Camera Controller GUI can be obtained from the following URL:

<http://www.flir.com/cvs/cores/resources/software/tau/>

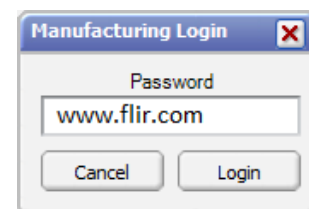
Once the FLIR Camera Controller GUI is installed, run the program. Connect to the camera by clicking Tools → Connection. Select the appropriate COM Port and set your Baud rate to 921600.



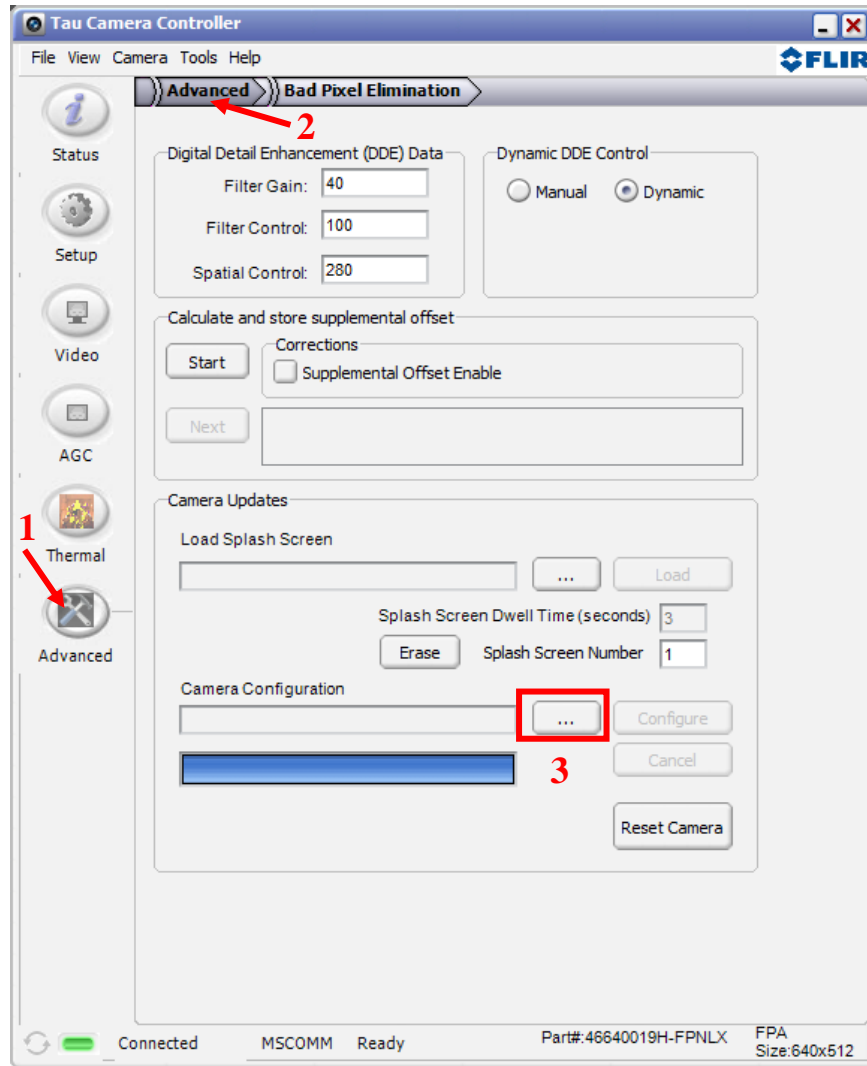
**Figure 1: FLIR Camera Controller GUI – Camera Connection Window**

It should now say Connected on the bottom of the GUI.

The Advanced Tab contains many features that can be considered to be for advanced users. For this reason, a special keystroke and password is required to display the Advanced Tab. The keystroke is **Ctrl+Shift+a** and the password is **www.flir.com**. After the keystroke is performed, the following dialog will appear. Note that the text in the following image is added and a password typed will display as asterisks.



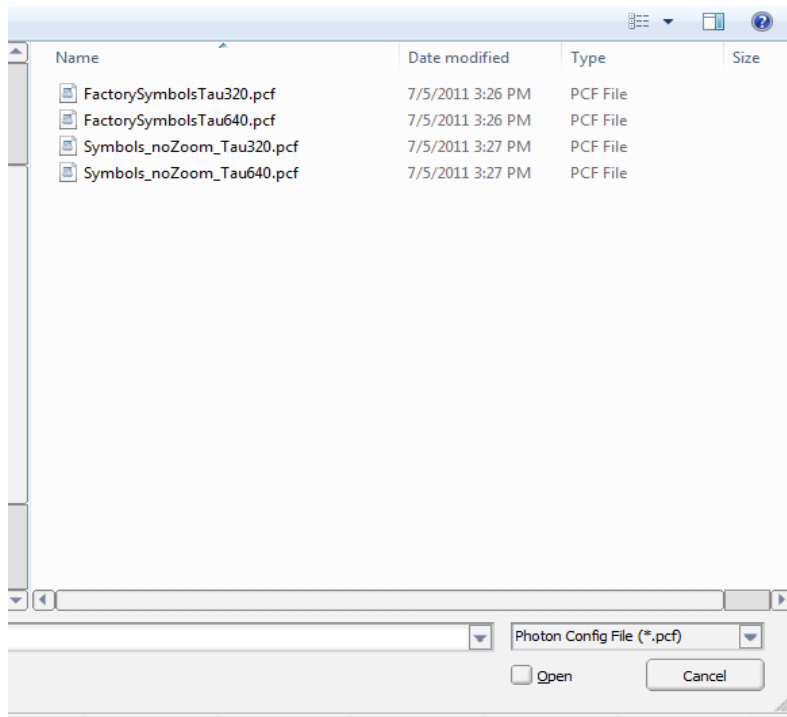
You can now access the Advanced Tab. Click on the “...” next to the Camera Configuration box:



**Figure 2: FLIR Camera Controller GUI – Advanced Tab**

Select the PCF that you would like to load and then click Configure. It is important to select either the 320 or 640 resolution symbology to match your camera. This can be determined by looking at the part number at the bottom of the FLIR Camera Controller GUI. Digits 3, 4, and 5 represent the resolution. For example, a 46640019H-FPNLX as shown above is a 640 resolution camera.

**Note:** All Tau 2.X / Quark cameras require a 640 resolution symbology file. This can be determined by the first two digits of the PN. If the first two digits of the Part Number are 41, 42, or 43, the camera connected is a FLIR Tau 1.X (previous releases of Tau 320 and Tau 640). If the first two digits are 46, 47, 48, the camera connected is a FLIR Tau 2. If the first two digits are 50, the camera connected is a FLIR Quark.



**Figure 3: Load PCF File**

The GUI will erase the current symbols file from the camera and load the selected one. When it is finished, click Reset Camera.

You can test this new functionality on the Video Tab by setting the zoom mode to 2x.