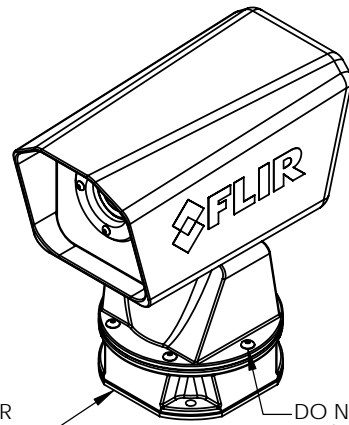
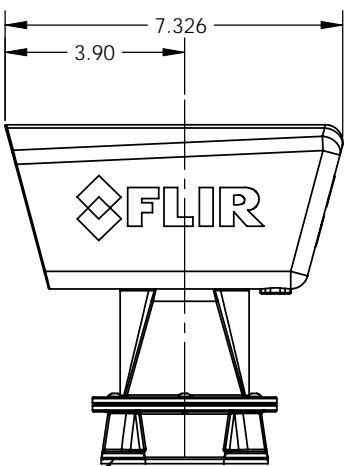
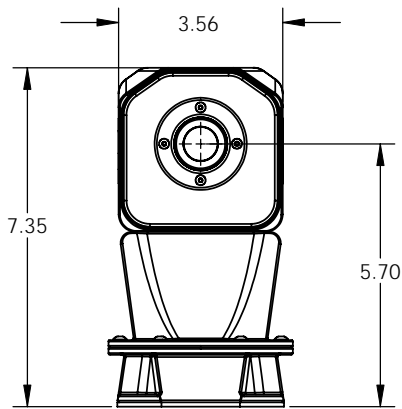


NOTES: UNLESS OTHERWISE SPECIFIED

ZONE	REV	DESCRIPTION	DATE	APPROVED
	A	INITIAL RELEASE	14-NOV-06	
	B	REVISED PER ECO 06-1188	22-DEC-06	
	C	REVISED PER ECO 07-XXXX	2-MARCH-07	
	D	REVISED PER ECO 103434	7-JULY-08	

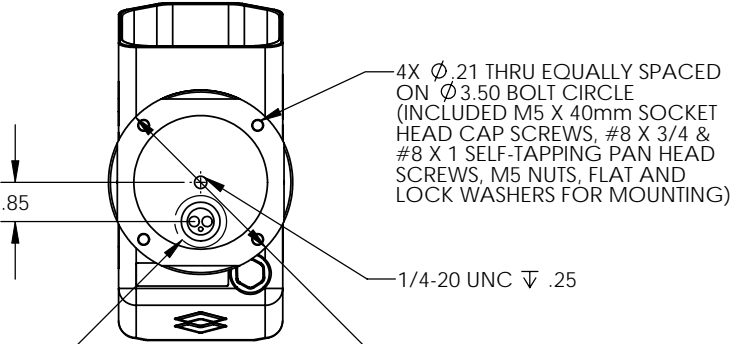


3/32" GASKET  
 Ø BASE

MOUNTING GASKET IS FOR SEALING ACCESS HOLE (UNIT IS IPX6 RATED FOR MOISTURE WITHOUT THIS GASKET)

DO NOT REMOVE THESE SCREWS

### STATIC NAVIGATOR ENVELOPE DETAILS



4X Ø.21 THRU EQUALLY SPACED ON Ø3.50 BOLT CIRCLE (INCLUDED M5 X 40mm SOCKET HEAD CAP SCREWS, #8 X 3/4 & #8 X 1 SELF-TAPPING PAN HEAD SCREWS, M5 NUTS, FLAT AND LOCK WASHERS FOR MOUNTING)

Ø1.13±.06  
 REQUIRED ACCESS HOLE CLEARANCE FOR POWER VIDEO CABLES & CONNECTORS

CONFIGURATIONS		DESCRIPTION
REV	DASH NO.	DESCRIPTION
120	432-0001-01	NAVIGATOR STATIC DELIVERABLE ASSEMBLY, WHITE NTSC
120	432-0001-03	NAVIGATOR STATIC DELIVERABLE ASSEMBLY, WHITE, PAL

THIRD ANGLE PROJECTION	THIS DOCUMENT IS CONTROLLED TO FLIR TECHNOLOGY CONTROL LEVEL 1.		
	The information contained in this document is proprietary and/or restricted. It may also be controlled for export purposes by the United States Government. Diversion contrary to US law is prohibited. This document and data disclosed herein or herewith is not to be reproduced, used, or disclosed in whole or in part to anyone without the written permission of FLIR Systems, Inc. This document is controlled to FLIR Technology Control Level 1. US government authorization is not required for export or transfer to a foreign person unless otherwise prohibited by the US Department of Commerce, Export Administration Regulations.		
INTERPRET DRAWING PER ASME Y14.5M-1994	MATERIAL SEE NOTE 1	PROJECT NO.	DATE
UNLESS OTHERWISE SPECIFIED SURFACE ROUGHNESS 32	FINISH SEE NOTE 2	DWG APPROVALS	TITLE
X = ±.1 XX = ± XXX = ± ANGULAR = ± 5° FILLET RADI = .005 MAX	UNLESS OTHERWISE SPECIFIED ALL MEASUREMENTS ARE IN INCHES. ALL DIMENSIONS IN ( ) ARE MM. DO NOT SCALE DRAWINGS.	CHK	NAVIGATOR
		ENG	SIZE B CAGE 064Y2 DWG NO. 432-0001-00 REV D
		APP	SCALE: 2:5 PRINTED: 9/5/2008 SHEET 1 OF 5

2 SOLIDWORKS MODEL:  
 MODEL REVISION:

1

4

3

DWG NO. SH 2 REV D

1

NOTES: UNLESS OTHERWISE SPECIFIED

The information contained in this document is proprietary and/or restricted. It may also be controlled for export purposes by the United States Government. Diversion contrary to US law is prohibited. This document and data disclosed herein or herewith is not to be reproduced, used, or disclosed in whole or in part to anyone without the written permission of FLIR Systems, Inc. This document is controlled to FLIR Technology Control Level 1. US government authorization is not required for export or transfer to a foreign person unless otherwise prohibited by the US Department of Commerce, Export Administration Regulations

D

D

C

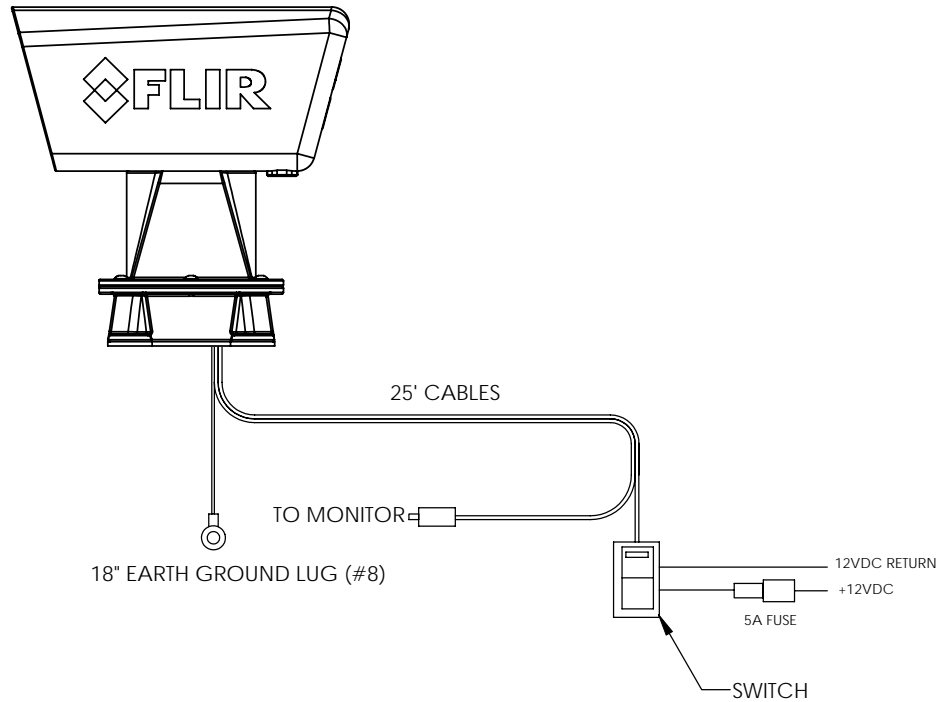
C

B

B

A

A



### STATIC NAVIGATOR PHYSICAL INTERCONNECT DETAIL

4

3

2

1

SOLIDWORKS MODEL:  
MODEL REVISION:

SIZE B	CAGE 064Y2	DWG NO. 432-0001-00	REV D
SCALE 2:5	PRINTED 9/5/2008	SHEET 2	OF 5

4

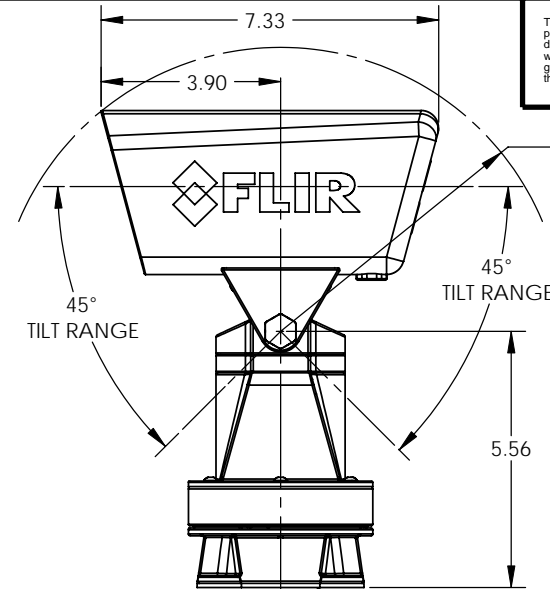
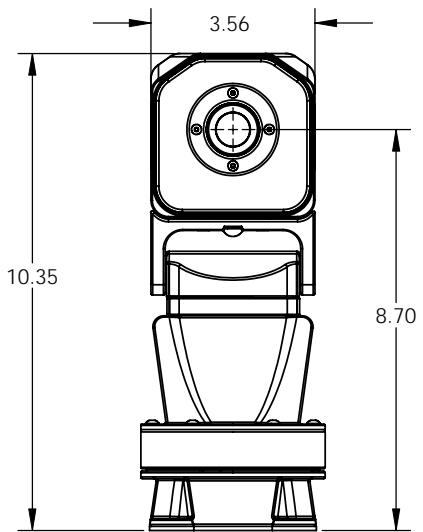
3

DWG NO. SH 3 REV D

1

NOTES: UNLESS OTHERWISE SPECIFIED

The information contained in this document is proprietary and/or restricted. It may also be controlled for export purposes by the United States Government. Diversion contrary to US law is prohibited. This document and data disclosed herein or herewith is not to be reproduced, used, or disclosed in whole or in part to anyone without the written permission of FLIR Systems, Inc. This document is controlled to FLIR Technology Control Level 1. US government authorization is not required for export or transfer to a foreign person unless otherwise prohibited by the US Department of Commerce, Export Administration Regulations



R6.16 TILT ENVELOPE

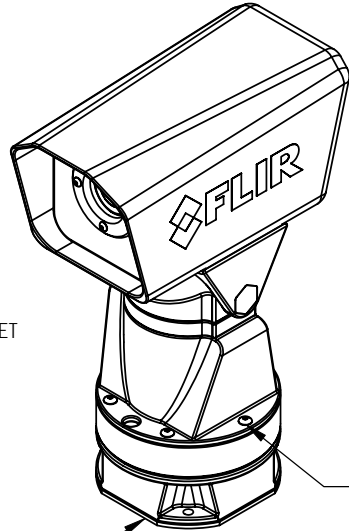
45° TILT RANGE

45° TILT RANGE

5.56

Ø8.20 PAN ENVELOPE ±180° (360° TOTAL RANGE)

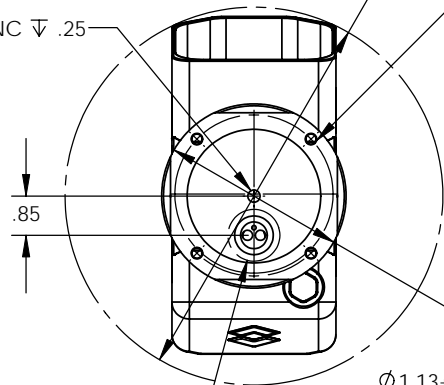
Ø BASE 3/32" GASKET



DO NOT REMOVE THESE SCREWS

MOUNTING GASKET IS FOR SEALING ACCESS HOLE (UNIT IS IPX6 RATED FOR MOISTURE WITHOUT THIS GASKET)

1/4-20 UNC ▽ .25



4X Ø.21 THRU EQUALLY SPACED ON Ø3.50 BOLT CIRCLE (INCLUDED M5 X 40mm SOCKET HEAD CAP SCREWS, #8 X 3/4 & #8 X 1 SELF-TAPPING PAN HEAD SCREWS, M5 NUTS, FLAT AND LOCK WASHERS FOR MOUNTING)

### PAN-TILT NAVIGATOR ENVELOPE DETAILS

Ø1.13±.06 REQUIRED ACCESS HOLE CLEARANCE FOR POWER VIDEO CABLES & CONNECTORS

REV	DASH NO.	DESCRIPTION
120	432-0001-09	NAVIGATOR, PAN/TILT, WHITE, NTSC
120	432-0001-011	NAVIGATOR, PAN/TILT, WHITE, PAL

SIZE B	CAGE 064Y2	DWG NO. 432-0001-01	REV D
SCALE 2:5	PRINTED: 9/5/2008	SHEET 3	OF 5

SOLIDWORKS MODEL: MODEL REVISION:

4

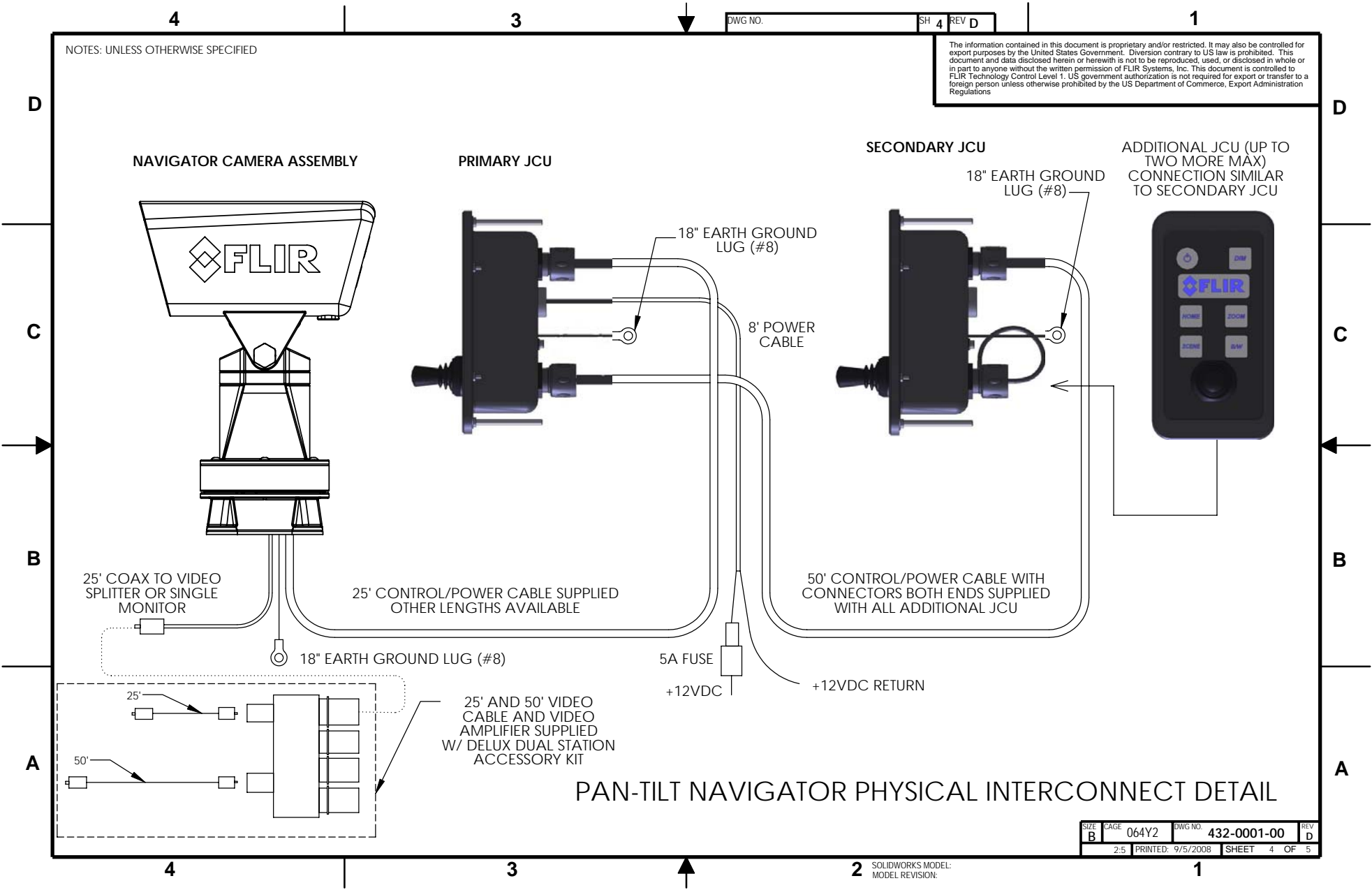
3

2

1

NOTES: UNLESS OTHERWISE SPECIFIED

The information contained in this document is proprietary and/or restricted. It may also be controlled for export purposes by the United States Government. Diversion contrary to US law is prohibited. This document and data disclosed herein or herewith is not to be reproduced, used, or disclosed in whole or in part to anyone without the written permission of FLIR Systems, Inc. This document is controlled to FLIR Technology Control Level 1. US government authorization is not required for export or transfer to a foreign person unless otherwise prohibited by the US Department of Commerce, Export Administration Regulations



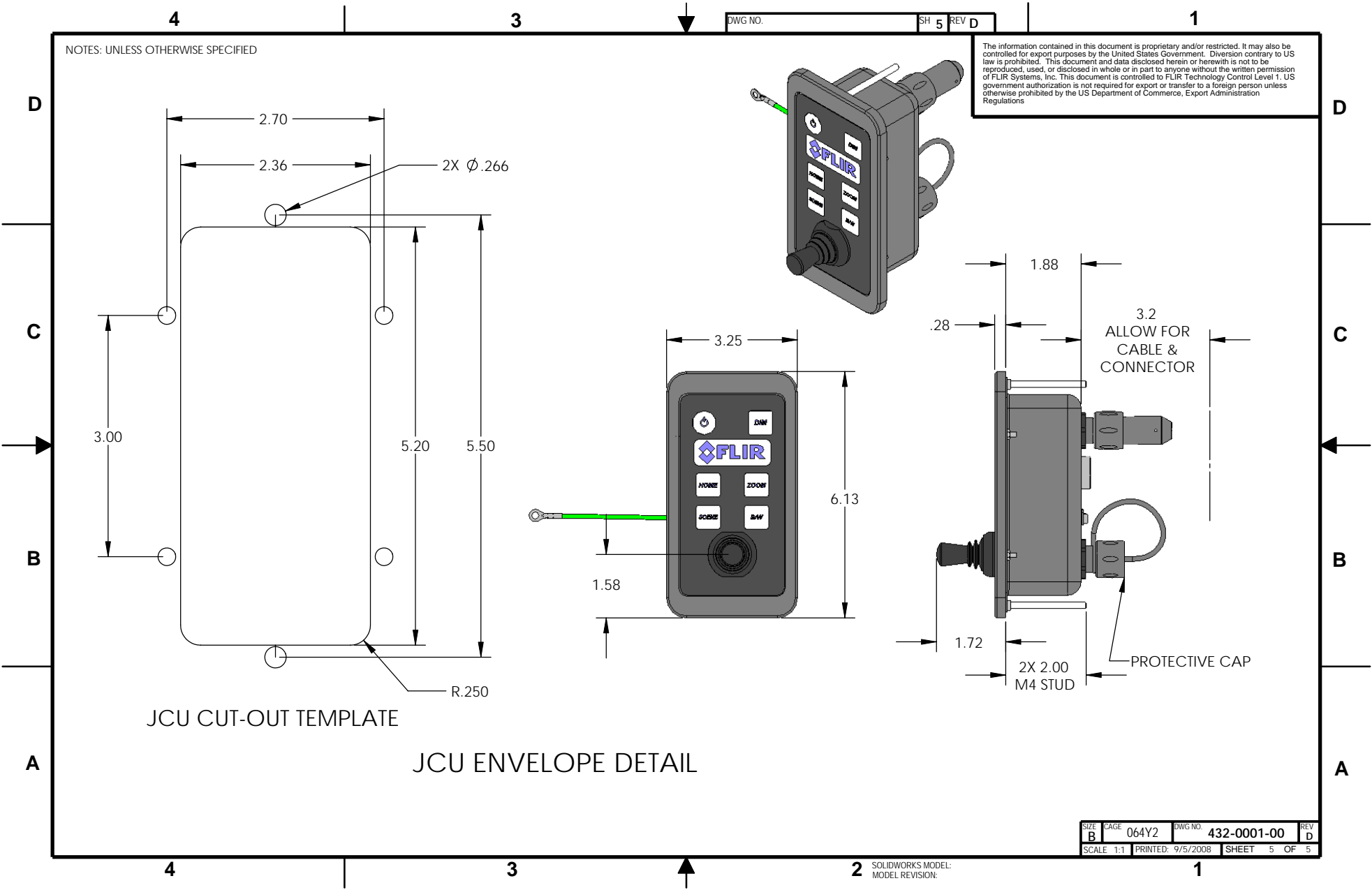
PAN-TILT NAVIGATOR PHYSICAL INTERCONNECT DETAIL

SIZE	CAGE	DWG NO.	REV
B	064Y2	432-0001-00	D
2:5		PRINTED: 9/5/2008	SHEET 4 OF 5

SOLIDWORKS MODEL:  
MODEL REVISION:

NOTES: UNLESS OTHERWISE SPECIFIED

The information contained in this document is proprietary and/or restricted. It may also be controlled for export purposes by the United States Government. Diversion contrary to US law is prohibited. This document and data disclosed herein or herewith is not to be reproduced, used, or disclosed in whole or in part to anyone without the written permission of FLIR Systems, Inc. This document is controlled to FLIR Technology Control Level 1. US government authorization is not required for export or transfer to a foreign person unless otherwise prohibited by the US Department of Commerce, Export Administration Regulations



SIZE B	CAGE 064Y2	DWG NO. 432-0001-00	REV D
SCALE 1:1	PRINTED 9/5/2008	SHEET 5	OF 5

SOLIDWORKS MODEL:  
MODEL REVISION: