



VOYAGER™

You don't have the luxury of staying in port at night. Take Voyager with you.

Voyager has two thermal imagers that make pictures from heat, not light, so you can see to navigate crowded shipping lanes, tight channels, and open ocean more safely than ever before, night and day. Its wide field of view imager is ideal for navigation, and its long-range thermal camera can detect hazards and other vessels out to the horizon. See and avoid buoys, outcroppings of land, channel markers, and other boats effortlessly, even in the dark of night.

Voyager augments your other on-board electronics perfectly, verifying radar returns and seeing things in the water that radar might miss. The system uses active stabilization to produce steady imagery, even in rough seas, and the Joystick Control Unit allows for precise pointing. Voyager plugs into existing video displays with standard video connections. Don't let the dark drive you off the water; stay on the job with Voyager.

MAN OVERBOARD



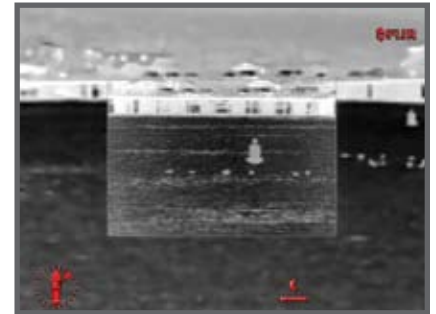
Security in Emergencies

24-HOUR VISION



Your Vision vs. FLIR Vision

COLLISION AVOIDANCE



See vessels, land & buoys anytime

Benefits

- **Navigate confidently in total darkness**
- **Avoid collisions with floating debris**
- **No more losing your night vision from spotlights**
- **Search and rescue**
- **Identify radar targets visually, and see what radars miss**
- **Daylight color camera IDs vessels when conditions permit**
- **Designed to survive harsh maritime conditions**
- **Affordable**
- **Easy to use**
- **360° visibility**





Voyager™

System Overview

Size	15" x 23"
Weight	45 lb
Azimuth Field-of-Regard	360° Continuous
Elevation Field-of-Regard	+/-90°
Slew Rate	Variable to 120°/sec

Thermal Imaging Performance

Sensor Type	2 Microbolometers
Wide FOV Imager	20° x 15° (35mm)
Narrow FOV Imager	5° x 3.75° (140mm)
Spectral Range	7.5 to 13.5 µm

Daylight Imaging Performance

Sensor Type	1/4" Super HAD
Wide FOV Limit	42° h @ F1.6
Narrow FOV Limit	1.6° h @ F3.8

System Specifications

Video Output	NTSC or PAL
Power Requirements	24VDC
Power Consumption	<50W nominal; 130W peak; 270W w/heaters

Environmental

Operating Temp	-32°C to 55°C
----------------	---------------

Joystick Control Unit (JCU)

Dimensions	6.0" x 8.75"
------------	--------------

FLIR Systems, Inc. CVS World Headquarters

FLIR Systems, Inc.
70 Castilian Dr.
Goleta, CA 93117
USA
PH: + 1 877 773 3547
PH: + 1 805 964 9797
FX: + 1 805 685 2711
sales@flir.com

EUROPE CVS Eurasian Headquarters

FLIR Systems CVS BV
Charles Petitweg 21
4847 NW Teteringen - Breda
Netherlands
PH: + 31 (0) 765 79 41 94
FX: + 31 (0) 765 79 41 99
flir@flir.com

FLIR Systems, Inc. Corporate Headquarters

FLIR Systems, Inc.
27700A SW Parkway Ave.
Wilsonville, OR 97070
USA
PH: + 1 877 773 3547
FX: + 1 503 498 3153
sales@flir.com

www.flir.com

