

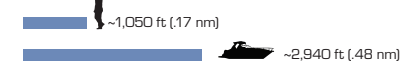


## First Mate II (MS, HM, & BHM-Series)

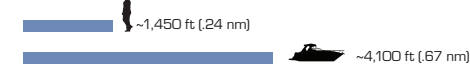
- Handheld
- Bi-ocular models offer comfortable long-term, long-range surveillance option
- Complements other thermal cameras
- Use it anywhere: Docking assistance, vessel inspection, search and rescue, see through smoke if there's a fire onboard

## Thermal Range Performance<sup>1</sup>

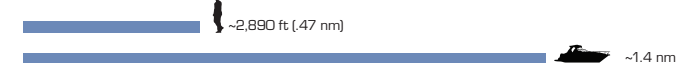
### MS-224 & HM-224 Pro (24° Lens)



### MS-324, & HM-324 XP+ (24° Lens)



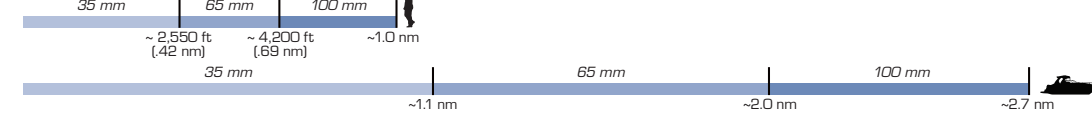
### HM-324 XP+ with 2x Extender<sup>††</sup> (12° Lens)



### HM-307XP (7° Lens)



### BHM-3X



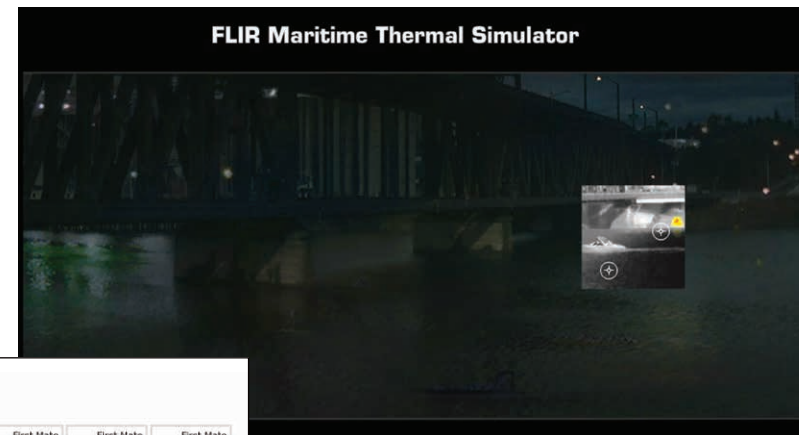
### BHM-6XR



See detailed specifications at [FLIR.com/Maritime](http://FLIR.com/Maritime).

## FLIR.com/Maritime

There's no better way to fully comprehend the power of thermal imaging than to try a camera for yourself. The next best thing is watching thermal video, which is exactly what you can do at [www.FLIR.com/Maritime](http://www.FLIR.com/Maritime). You can also try the Thermal Simulator and First Mate II Product Selector, read about the different ways thermal imaging is used in a maritime environment, and learn more about all FLIR thermal night vision systems for maritime use.



Visit [FLIR.com/Maritime](http://FLIR.com/Maritime) and try the new Maritime Thermal Simulator

**Compare FLIR First Mate Models**

Not sure which model is best for you? Select models below to compare.

**Compare products**  
You have no items to compare.

**Filter Options**

**Range - Detection of a Small Vessel**

At least 0.30 m / 0.98 ft

**Detector Resolution**

640x480  640x512

**Digital Still Image Storage**

Required  Not Required

**Digital Video Storage**

Required  Not Required

**Analog Video Out**

Required  Not Required

**Show All**

Note: Actual range may vary depending on camera model, environmental conditions, user experience, and display method. Thermal images shown are for illustrative purposes only, and may not have been taken by the camera series depicted.

Compare products online with the First Mate II Product Selector

## About FLIR Systems

As the world's largest commercial infrared company, FLIR Systems has fielded more high-quality maritime thermal night vision systems than anyone in the world. Our rugged, stabilized imagers are on thousands of civil and maritime platforms in the U.S. and around the world, more than every other manufacturer combined.

With thousands of our thermal cameras on the job in military, scientific, law enforcement, and security applications, FLIR brings an unmatched level of experience and dedication to the creation of cutting-edge thermal night vision systems. We design and manufacture all critical technologies inside our products, including detectors, electronics, and special lenses.

Whether you're heading out early, coming home late, or cruising around the clock, FLIR has a thermal night vision system to meet your needs.



**PORTLAND**  
Corporate Headquarters  
FLIR Systems, Inc.  
27700 SW Parkway Ave.  
Wilsonville, OR 97070  
USA  
PH: +1 877.545.5094

**BOSTON**  
Sales  
FLIR Systems, Inc.  
9 Townsend West  
Nashua, NH 03063  
USA  
PH: +1 877.545.5094

**SANTA BARBARA**  
FLIR Systems, Inc.  
70 Castilian Dr.  
Goleta, CA 93117  
USA  
PH: +1 877.545.5094

NASDAQ: FLIR



# See at Night. Stay Safe.

## Nighttime on the Water is Safer with FLIR

Whether you enjoy fishing, cruising, sailing, or just exploring your world, you want to be worry-free so you can enjoy the ride and bring everyone home safe. Thermal imaging cameras help you do just that, 24 hours a day.

FLIR Systems is the world leader in developing high-performance technology that detects differences in heat, not light. No matter how much light is available—from pitch black to moonlight to severe midday glare—thermal imagers always display clear infrared video.

## A Camera for Every Vessel

All FLIR thermal night vision cameras let you see clearly in total darkness, but you can also get color or lowlight cameras, gyro-stabilization, radar interfacing, and other helpful features. Which FLIR is right for you?

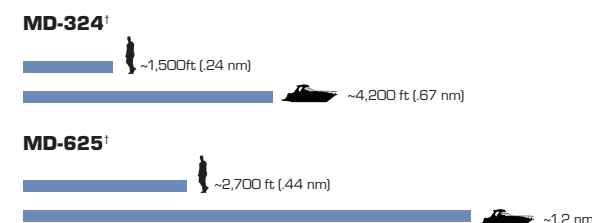
- How far do you need to see?
- Are you going to integrate the FLIR camera with other on-board systems?
- Do you want to be able to take it off of your boat?

### MD-Series



- Affordable, fixed-mount thermal imager that is easy to install and operate
- Interface options accessible through select MFDs, optional JCU, or iOS devices when Wi-Fi is available
- Weighs only three pounds

### Thermal Range Performance<sup>†</sup>



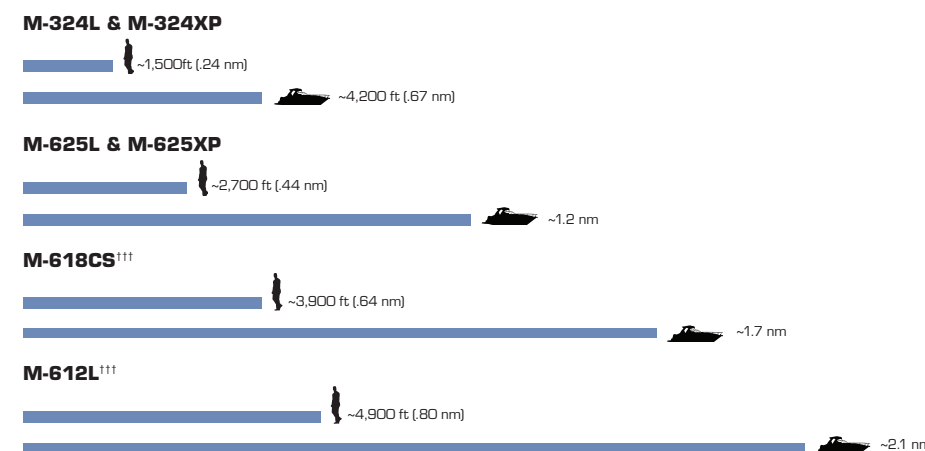
See detailed specifications at [FLIR.com/MD-Series](http://FLIR.com/MD-Series).

### M-Series



- Premium pan/tilt thermal imager
- Standard and high-resolution thermal camera options
- Auto-scan feature
- Thermal only or thermal/lowlight multi-sensor configurations
- 2X and 4X e-zoom functions
- Easy-to-use joystick control

### Thermal Range Performance<sup>†</sup>



See detailed specifications at [FLIR.com/M-Series](http://FLIR.com/M-Series).

## Why Thermal is Better

Thermal night vision cameras make pictures by revealing tiny differences in heat, helping you to see landmarks, obstacles, and other vessels clearly in all lighting conditions, from bright daylight to complete darkness. The “detectors”—the key to FLIR technology for decades—pick up the thermal energy emitted by everything, even ice! FLIR cameras then convert that data into the crisp infrared video you see on the display.

### Voyager



- Long-range
- Gyro-stabilized pan/tilt
- Firefighting software
- 2 thermal cameras
- Daylight/lowlight color camera
- Network-ready
- NMEA interfaces
- Radar slew-to-cue
- Video Tracker

### Thermal Range Performance<sup>†</sup>



See detailed specifications at [FLIR.com/Voyager](http://FLIR.com/Voyager).

### MU/MV Series



- Military-grade, long-range, multi-sensor system
- Pan 360° and tilt +/- 90°
- Active gyro-stabilization
- Video and radar tracking
- Continuous optical zoom
- Picture-in-Picture (PIP) mode
- Digital Detail Enhancement (DDE)
- Joy Stick Control Unit
- Ball Up/Down Configuration

See detailed specifications at [FLIR.com/MU-Series](http://FLIR.com/MU-Series)

### Thermal Range Performance<sup>†</sup>



See detailed specifications at [FLIR.com/MU-Series](http://FLIR.com/MU-Series)

<sup>†</sup> = Actual object detection range performance may vary depending on camera set-up, environmental conditions, user experience, and type of display used.  
<sup>††</sup> = 2x Extender pertains to HM-Series only.  
<sup>†††</sup> = The M-612L provides extremely long-range imaging and should only be used on stable platforms for best performance.  
 Standard analog video output for viewing on any monitor with an analog video input.  
 All specifications are subject to change without notice. Visit [www.flir.com](http://www.flir.com) for the most up-to-date specifications.



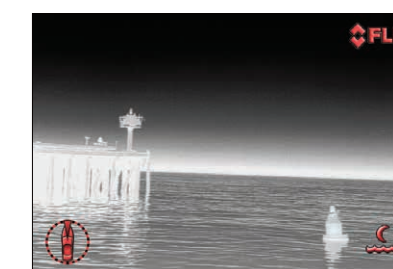
Night Vision (NVG)



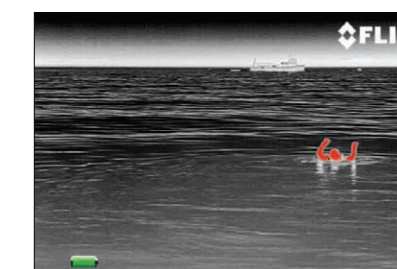
Day light camera



Thermal Image



Identify buoys and other obstacles in the water.



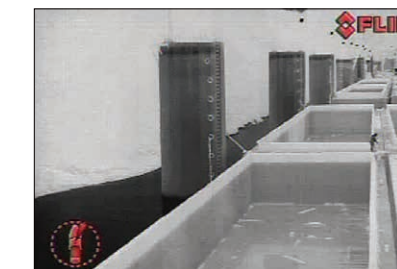
Search and Rescue day or night.



Locate stranded vessels.



Oil on water.



Crew safety.



Iceberg detection.