

Thermal Cameras

THE 24-Hour Signal
Detection & ITS
Solution



The Best Way to Control Traffic Signals

Standard video cameras are plagued by lots of imaging challenges – sun glare, shadows, wet streets, snow, fog – all of which can confuse the video detection software that controls the lights and cause endless false calls and missed calls.

FLIR's high-performance thermal cameras solve all of these imaging challenges, giving you uninterrupted 24-hour detection of motorized vehicles, cyclists, and pedestrians regardless of the amount of light available.

Because they can see clearly regardless of lighting or weather conditions, Thermal Signal Control cameras are the most efficient, cost-effective way to improve traffic flow, automatically determine traffic volume, and control signals.



Thermal cameras can see cars at the stop bar and pedestrians in the intersection clearly in the dark.

For more information, visit www.flir.com/traffic or call 877.773.3547 today!

Uninterrupted Roadway Monitoring Performance

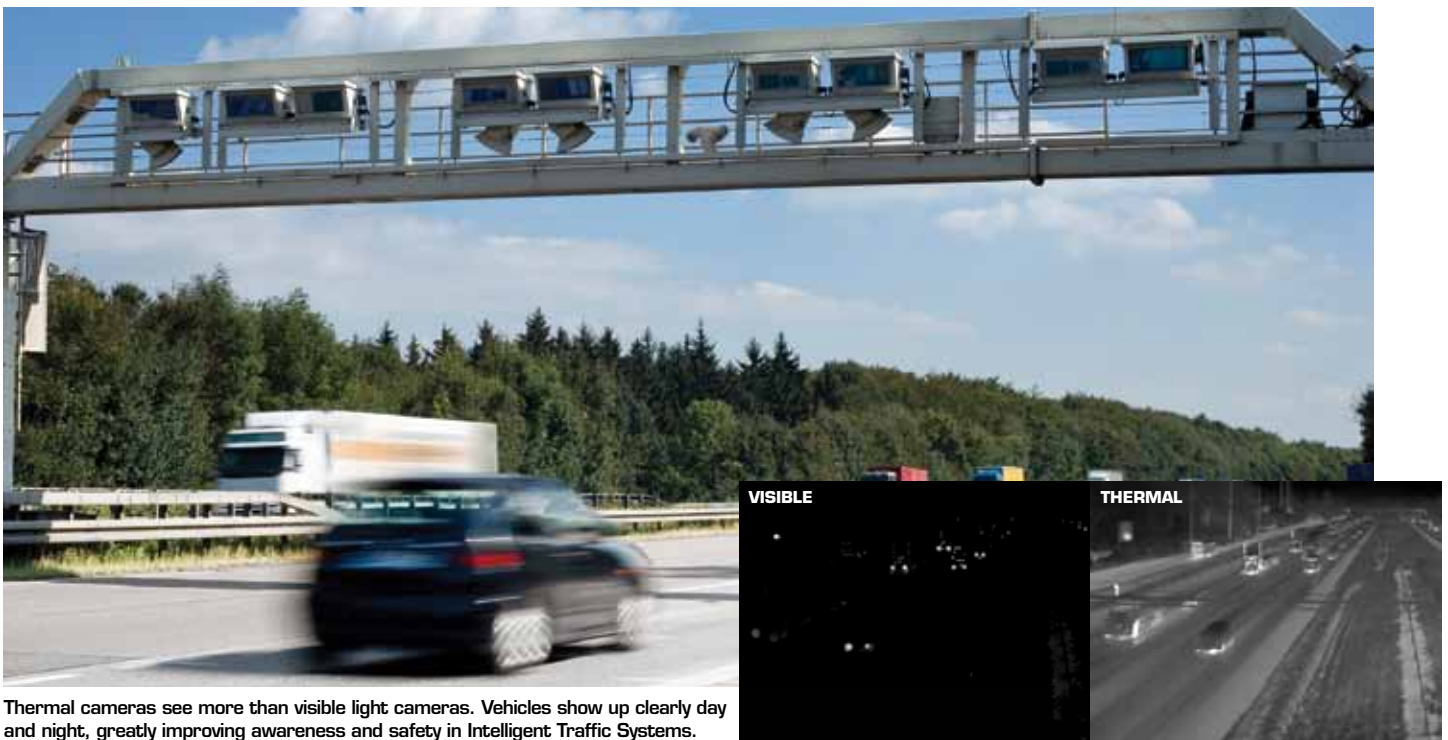
ITS roadway monitoring cameras need to give you clear information about what's happening on your roadways, and FLIR's thermal cameras for Roadway Monitoring do just that. By coupling thermal and visible-light imaging in a single rugged pan/tilt system, you get complete roadway video coverage you can monitor in real time over the internet.

Because thermal cameras can see clearly 24/7 they make video surveillance of roadways for Intelligent Transportation Systems more effective and more efficient. And, because they see farther in complete darkness, you can reduce pole and infrastructure costs. Thermal cameras let you do more for less.

Thermal cameras provide uninterrupted imaging performance regardless of the time of day or conditions.

Use FLIR's thermal cameras for:

- Incident Detection
- Traffic Flow Monitoring
- Vehicle Counting



Thermal cameras see more than visible light cameras. Vehicles show up clearly day and night, greatly improving awareness and safety in Intelligent Traffic Systems.

For more information, visit www.flir.com/traffic or call 877.773.3547 today!

The Thermal Advantage

Thermal cameras make clear, high contrast images from heat not light, so they're impervious to all of the common imaging challenges that plague traffic monitoring and signal control systems that use visible light imaging technologies.

This makes thermal cameras immune to:

- Direct Sunlight – even at sunrise and sunset!
- Nighttime Headlight Glare
- Reflection Off Wet Surfaces
- Shadows
- Light Fog

Because they can look directly into the sun and still detect vehicle, pedestrian, and bicycle traffic, thermal cameras let you position them wherever they'll be the most effective, maximizing safety and traffic detection without concern for sun angle or obstructions.



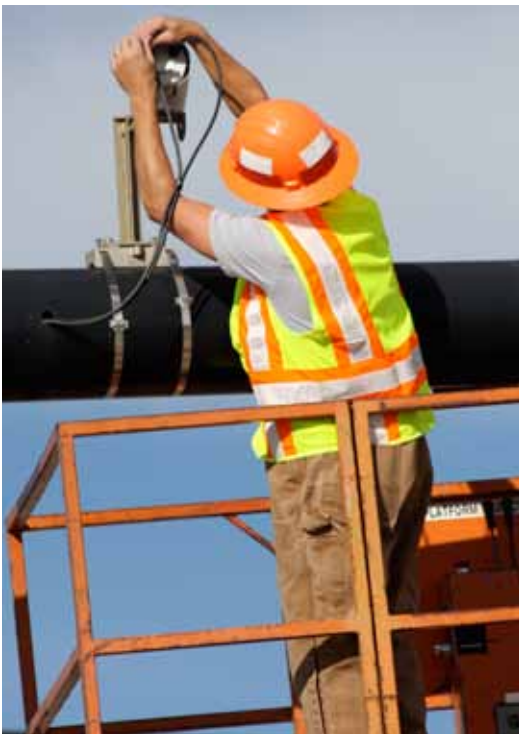
Thermal cameras see in total darkness and show you more scene detail.



Thermal cameras see through glare and backlighting, improving signal control.



Thermal cameras see into the deepest shadows.



Easy to Install and Integrate

As drop-in replacements for your existing visible-light cameras, and with robust imaging performance that you have to see to believe, FLIR cameras are pivotal pieces of equipment for effective traffic signal control and roadway monitoring.

Thermal cameras are:

- **Easy to Install** – They use the same mechanical hardware, mounting arms, cabling, and processors that you're currently using.
- **Easy to Integrate** – Outputting a standard analog video signal, FLIR cameras work with your existing video detection systems.
- **Easy to Maintain** – Thermal cameras require no periodic maintenance and have no optical lens to keep clean.

For more information, visit www.flir.com/traffic or call 877.773.3547 today!

Traffic Control Camera Families

Our Signal Control and ITS cameras combine a variety of cutting-edge technologies.

Cameras for Signal Control

FLIR's thermal Signal Control cameras provide a video signal designed to get the most out of industry standard analytics packages, so you'll have traffic flow with the lowest possible rates of false, missed, or dropped calls 24/7.



SR-Series



F-Series

Cameras for Roadway Monitoring

Multi-sensor PTZ cameras expand the capabilities of Signal Control cameras by pairing a thermal camera with an industry-standard CCD camera, for full 360° coverage and an effective range of over 3.5 miles.



PT-Series



D-Series

For more information, visit www.flir.com/traffic or call 877.773.3547 today!



PORTLAND

Corporate Headquarters
FLIR Systems, Inc.
27700 SW Parkway Ave.
Wilsonville, OR 97070
USA
PH: +1 503.498.3547
FX: +1 503.498.3153
sales@flir.com

SANTA BARBARA

FLIR Systems, Inc.
70 Castilian Dr.
Goleta, CA 93117
USA
PH: + 1 805.964.9797
PH: + 1 877.773.3547
(Sales)
PH: + 1 888.747.3547
(Apps)
FX: + 1 805.685.2711

BOSTON

FLIR Systems, Inc.
25 Esquire Road
North Billerica, MA 01862
USA
PH: +1 978.901.8000

THE NETHERLANDS

FLIR Systems BV
Charles Petitweg 21
4847 NW Teteringen - Breda
The Netherlands
PH: +31 (0) 765 79 41 94
FX: +31 (0) 765 79 41 99
flir@flir.com

www.flir.com/traffic

Equipment described herein may require US Government authorization for export purposes. Diversion contrary to US law is prohibited.
Specifications are subject to change without notice. ©2011 FLIR Systems, Inc. All rights reserved. 1007-850 (Rev. 6/11)