

# H-Series Quick Start Guide



**Power Button** – The H-Series camera has 3 power modes: On, Off, and Standby.

- On - Takes approximately 90 seconds (during bootup there is a fast-flashing red LED on the eyepiece display).
- Standby - After the camera is on, pressing the Power button will toggle the camera between On and Standby mode. (In Standby there is a slow-flashing red LED on the eyepiece display.)
- Off - Push and hold the power button for 8 sec. to turn off.

**Capture Button** – When enabled, take snapshots (press and release) or video clips (press and hold) to the SD memory card.

**Display Brightness** – Toggle through five brightness settings.

**White/Black Hot** – In White Hot mode, hotter items appear as white or light grey.

In the Black Hot mode, hotter items appear as black or dark grey.

**2x Zoom** – When enabled, causes the image to zoom to 2X.

**Diopter Controls** – The diopter adjustment knob allows a  $\pm 2$  diopter range.



This document is controlled to FLIR Technology Level 1. The information contained in this document pertains to a defense article controlled for export by the International Traffic in Arms Regulations (ITAR). FLIR trade secrets contained herein are subject to disclosure restrictions as a matter of law. Diversion contrary to US law is prohibited. [US Government authorization for public release has been obtained from the Office of Security Review, authorization no. 1Q-S-0367.] Additional US Department of State authorization is not required prior to export or transfer to foreign persons or parties, unless otherwise prohibited.

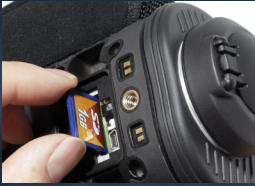
431-0003-01-12-QS Rev 110



## Installing the Batteries and SD Card

The batteries must be installed and charged before using your camera. Install your SD card.

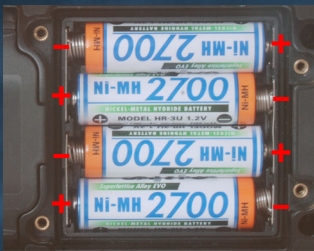
1. Remove the small SD card cover.  
No tools are required.
2. Install the SD card.



Grasp SD card cover edges and pull



Battery cover



3. Loosen the four captive screws securing the battery cover.

4. Pry off the battery cover by grasping the front edge where the SD card cover was removed.

5. Install the batteries as shown.

6. Snap the SD card cover back into place and re-install the battery cover—it only fits one way.

## Charging the Camera

The batteries in the camera must be charged prior to their first use.

1. Connect the Hot Shoe to your camera.

Plug from power adapter

2. Ensure that the plug is fully seated in the Hot Shoe.

Charging indicator

When charging correctly, the charging indicator will be lit yellow and will blink green for one second within about 35 seconds.

The charging indicator will continue to blink at decreasing intervals until the batteries are fully charged.

When fully charged, the charging indicator will be lit solid green.

The initial charge time is approximately 4 hours.

Solid green

