

REVISIONS			
LTR	DESCRIPTION	DATE	APPROVED
A	INITIAL RELEASE	12-10-07	

Parts List

ITEM	PART NUMBER	DESCRIPTION	QTY
2	308-0147-00	Electrical Drawing & Wiring Diagram	1
1	102-PS209-42	Mechanical Drawing	1

PROJECT EVS3	 FLIR Systems, Inc. 70 Castilian Dr., Goleta, CA 93117 (805) 690-3547		
------------------------	---	--	--

APPROVALS	DATE	<small>PROPRIETARY THIS DOCUMENT AND DATA DISCLOSED HEREIN OR HEREWITH IS NOT TO BE REPRODUCED, USED, OR DISCLOSED IN WHOLE OR IN PART TO ANYONE WITHOUT THE PERMISSION OF FLIR SYSTEMS INC..</small>	
------------------	-------------	---	--

DRAWN MKENT	11/15/07	TITLE EVS3 INSTALLATION GUIDE		
-----------------------	----------	--	--	--

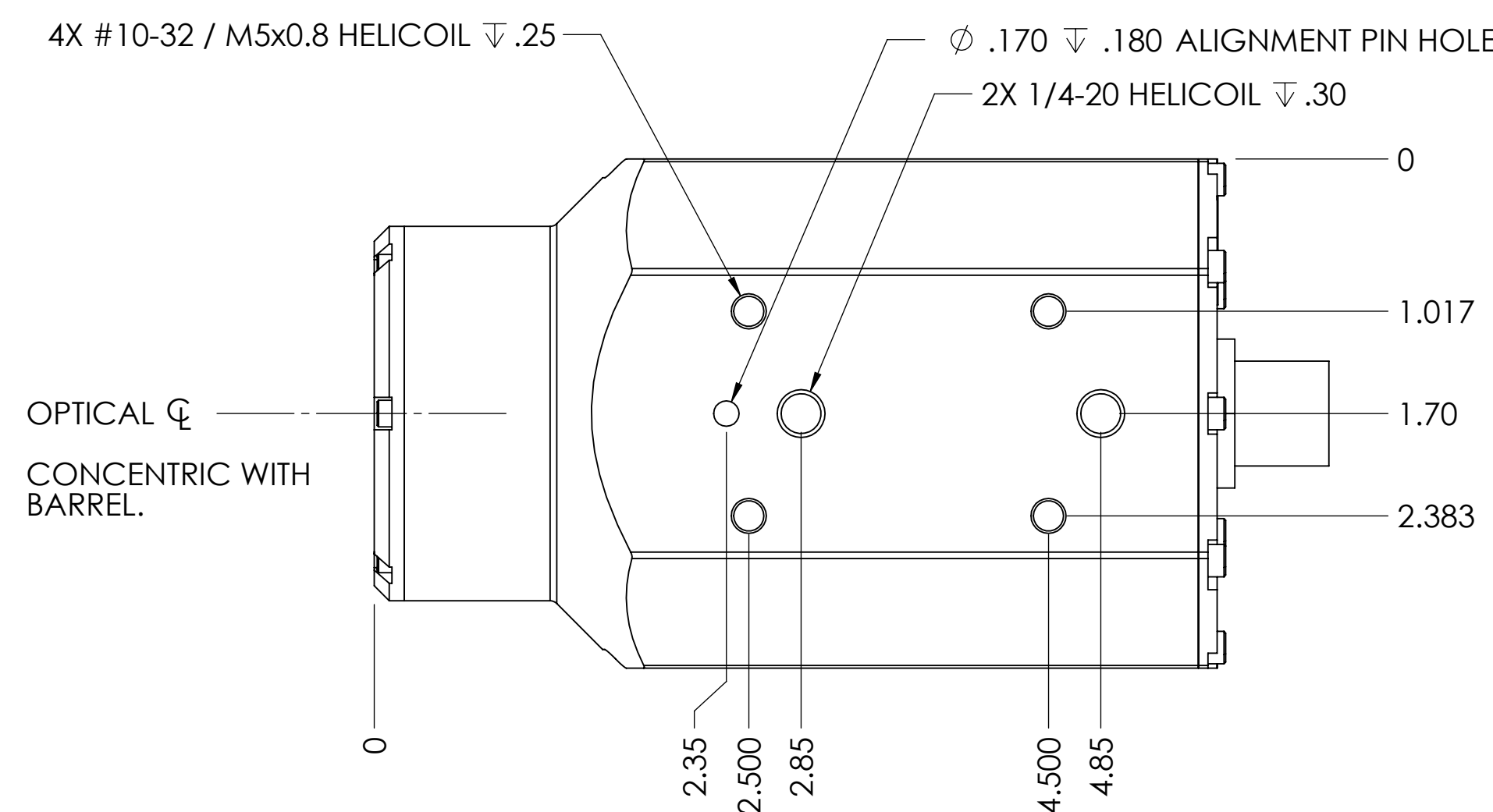
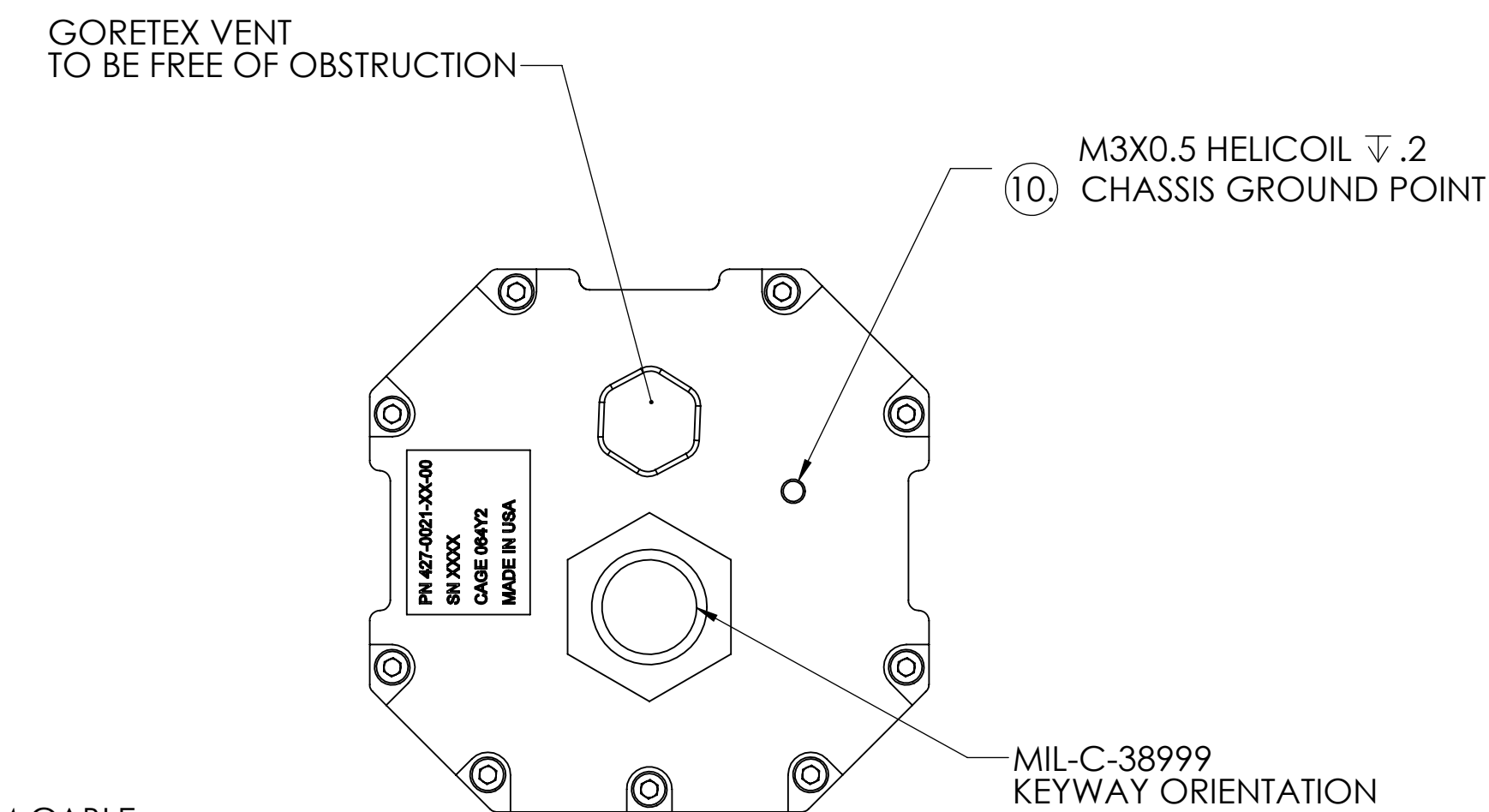
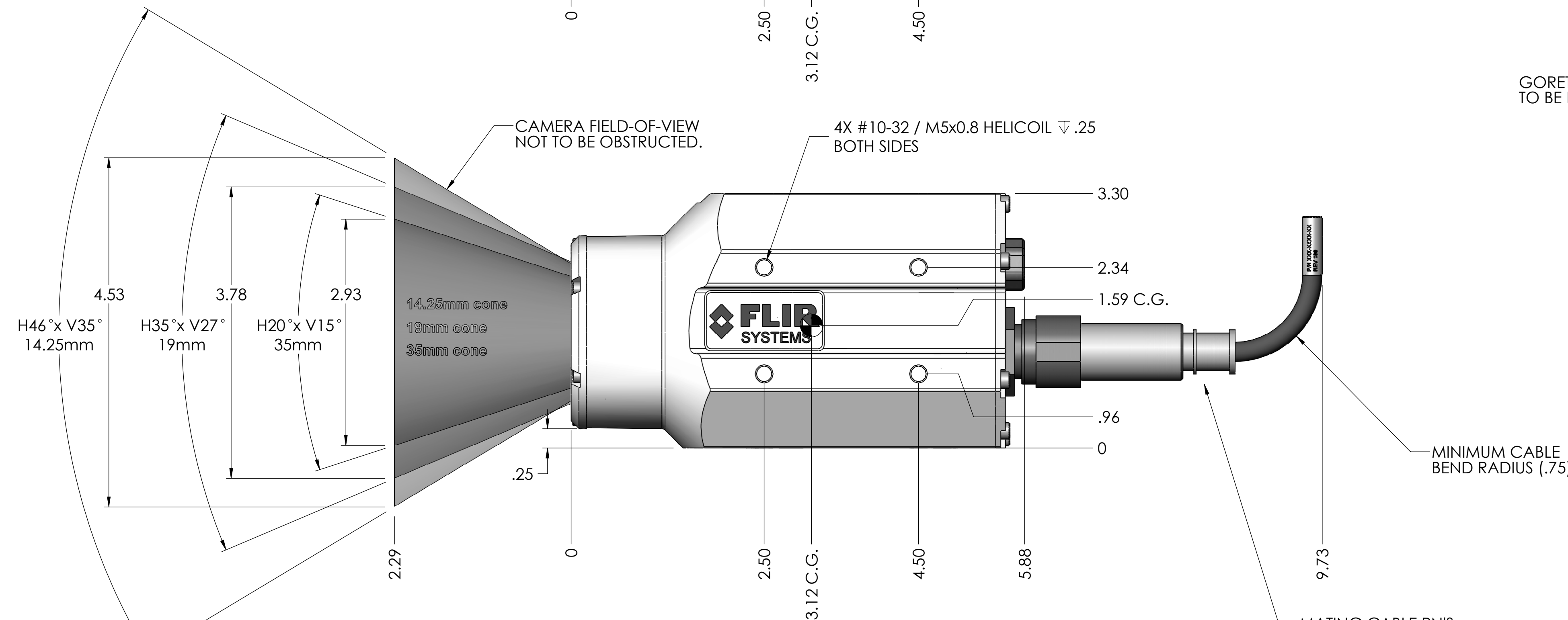
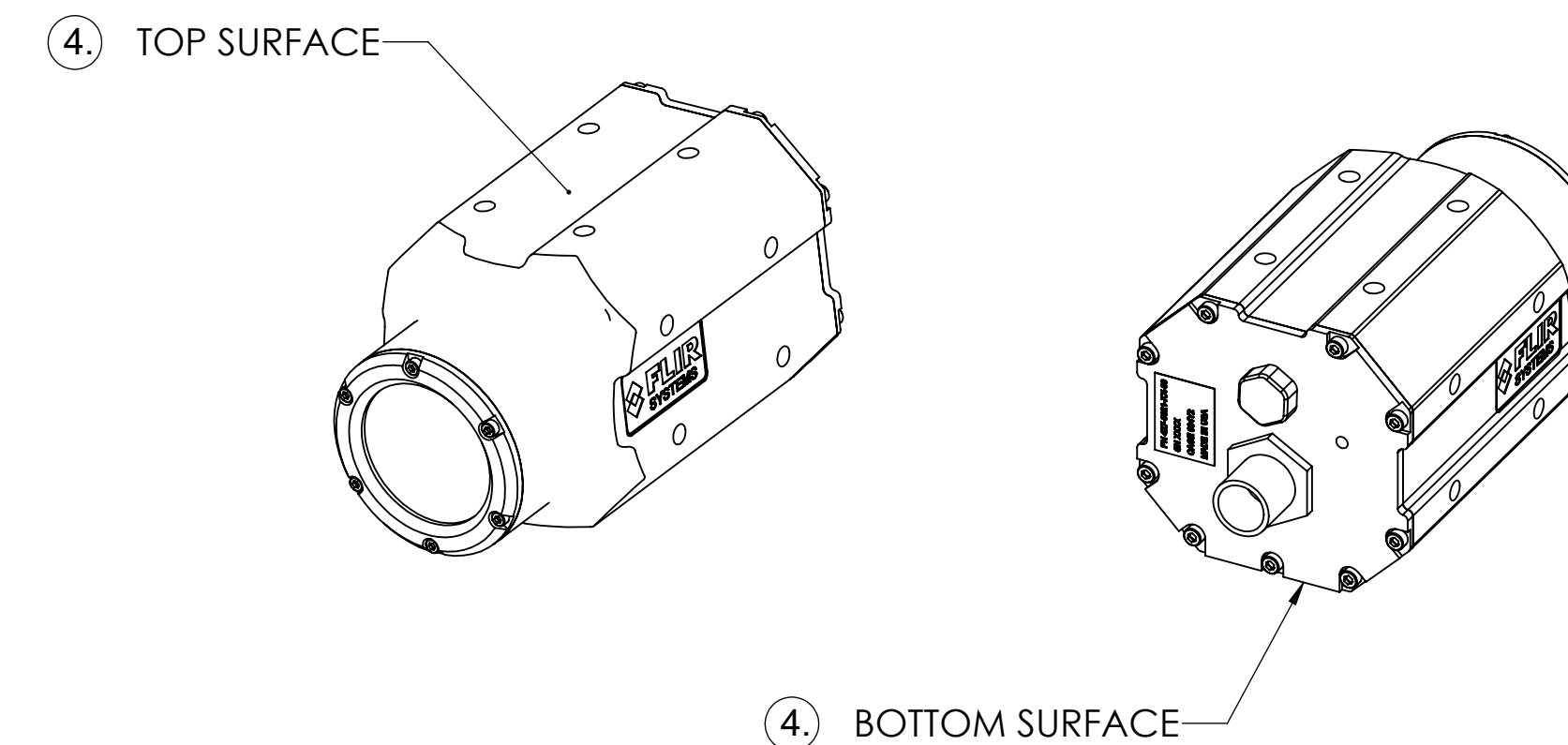
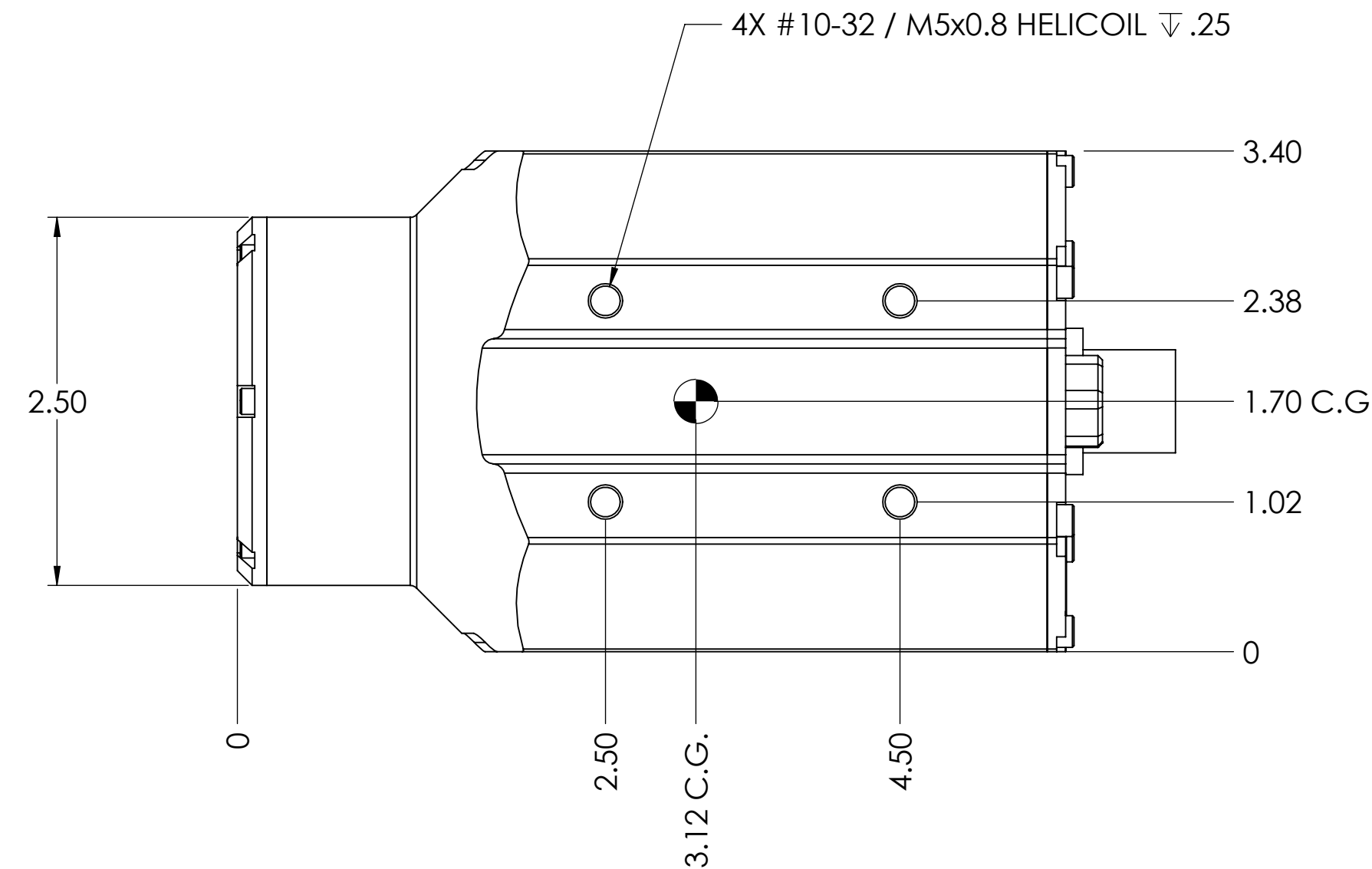
ENG MKENT	11/15/07	SIZE A & D	CAGE 064Y2	DWG NO. 427-0021-00-11	REV 100
---------------------	----------	---------------------------------	-----------------------------	---	--------------------------

APPR		SCALE: NONE	PRINTED	SHEET 1 OF 3
-------------	--	------------------------------	----------------	---------------------

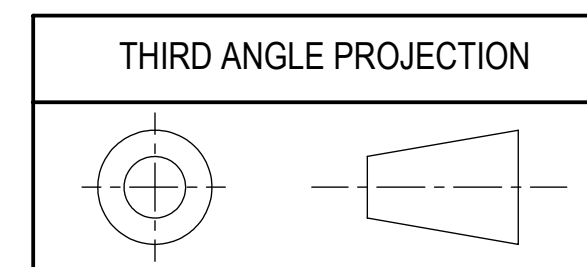
NOTES: UNLESS OTHERWISE SPECIFIED.

1. INTERPRET DRAWING IAW ASME Y14.100. CLASSIFICATION PER MIL-DTL-31000, PARA 3.6.2.4.
2. INTERPRET DIMENSIONS AND TOLERANCES PER ASME Y14.5M-1994.
3. WEIGHT: <2.9 LBS. CG SHOWN WITHOUT CABLE EFFECTS.
4. PROPER IMAGE DISPLAY ORIENTATION REQUIRES INSTALLATION WITH TOP SURFACE UP. SEE ISOMETRIC DRAWING VIEW.
5. FIELD OF VIEW NOT TO BE OBSTRUCTED BY ANY MATERIAL.
6. MOUNTING: UNIT MUST BE SECURED AT MINIMUM TO ONE FLAT SURFACE WITH ONE OF THE FOLLOWING FASTENER CONFIGURATIONS:
MIN. (3x) 10-32, .190 INSERTION, 45 IN-LB ± 7 IN-LB.
MIN. (3x) M5x0.8, 5mm INSERTION, 45 IN-LB ± 7 IN-LB.
MIN. (2x) 1/4-20, .250 INSERTION, 60 IN-LB ± 10 IN-LB.
7. SAFETY WIRE PER MS33540.
8. CABLE CONNECTOR CONFORMS TO MIL-C-38999 SERIES III.
9. INPUT POWER REQUIREMENT: 22-30.3 VDC, TO BE SUPPLIED BY AVIONICS OR ACCESSORY BUS. UNIT NOT TO OPERATE DURING ENGINE START. 2 AMP CIRCUIT BREAKER RECOMMENDED.
10. ELECTRICAL BOND PER MIL-B-5087. ANY AVAILABLE THREADED HOLE.
11. REFER TO YOUR AIRCRAFT'S FLIGHT MANUAL, FLIGHT MANUAL SUPPLEMENT, STC DOCUMENTATION, OR OTHER FIELD APPROVAL FOR MORE DETAILED INSTALLATION INSTRUCTIONS, IF APPLICABLE.
12. REFERENCE DOCUMENTS:
DO-160E PERFORMANCE REPORT, FLIR PN 105-0025-01.

REVISIONS				
ZONE	REV	DESCRIPTION	DATE	APPROVED
-	100	INITIAL RELEASE	11/15/2007	MK



ASSY PN	LENS	VIDEO SIGNAL
427-0021-01-07	14.25mm	NTSC
427-0021-02-07	14.25mm	PAL
427-0021-03-07	19mm	NTSC
427-0021-04-07	19mm	PAL
427-0021-05-07	35mm	NTSC
427-0021-06-07	35mm	PAL



INTERPRET DRAWING PER ASME Y14.5M-1994 UNLESS OTHERWISE SPECIFIED SURFACE ROUGHNESS 32 X = ±.1 .XX = ±.01 .XXX = ±.005 ANGULAR = ±.5° FILLET RADII = .005 MAX	MATERIAL	N/A	PROJECT NO.	Indigo Operations 70 Castilian Drive Goleta, CA 93117	
	FINISH	N/A	APPROVALS	DATE	TITLE
UNLESS OTHERWISE SPECIFIED ALL MEASUREMENTS ARE IN INCHES. ALL DIMENSIONS IN [] ARE MM. DO NOT SCALE DRAWING.	UNLESS OTHERWISE SPECIFIED ALL MEASUREMENTS ARE IN INCHES. ALL DIMENSIONS IN [] ARE MM. DO NOT SCALE DRAWING.	DWN MKENT	09/06/2007	EVS3 ENCLOSURE INTERFACE CONTROL DOCUMENT	
		CHK		SIZE	CAGE
		DSGN MKENT	10.22.07	DWG NO.	REV
	ENG		D	064Y2	427-0021-00-19 100
	APP		SCALE	1:1	PRINTED: 12/14/2007 SHEET 1 OF 1

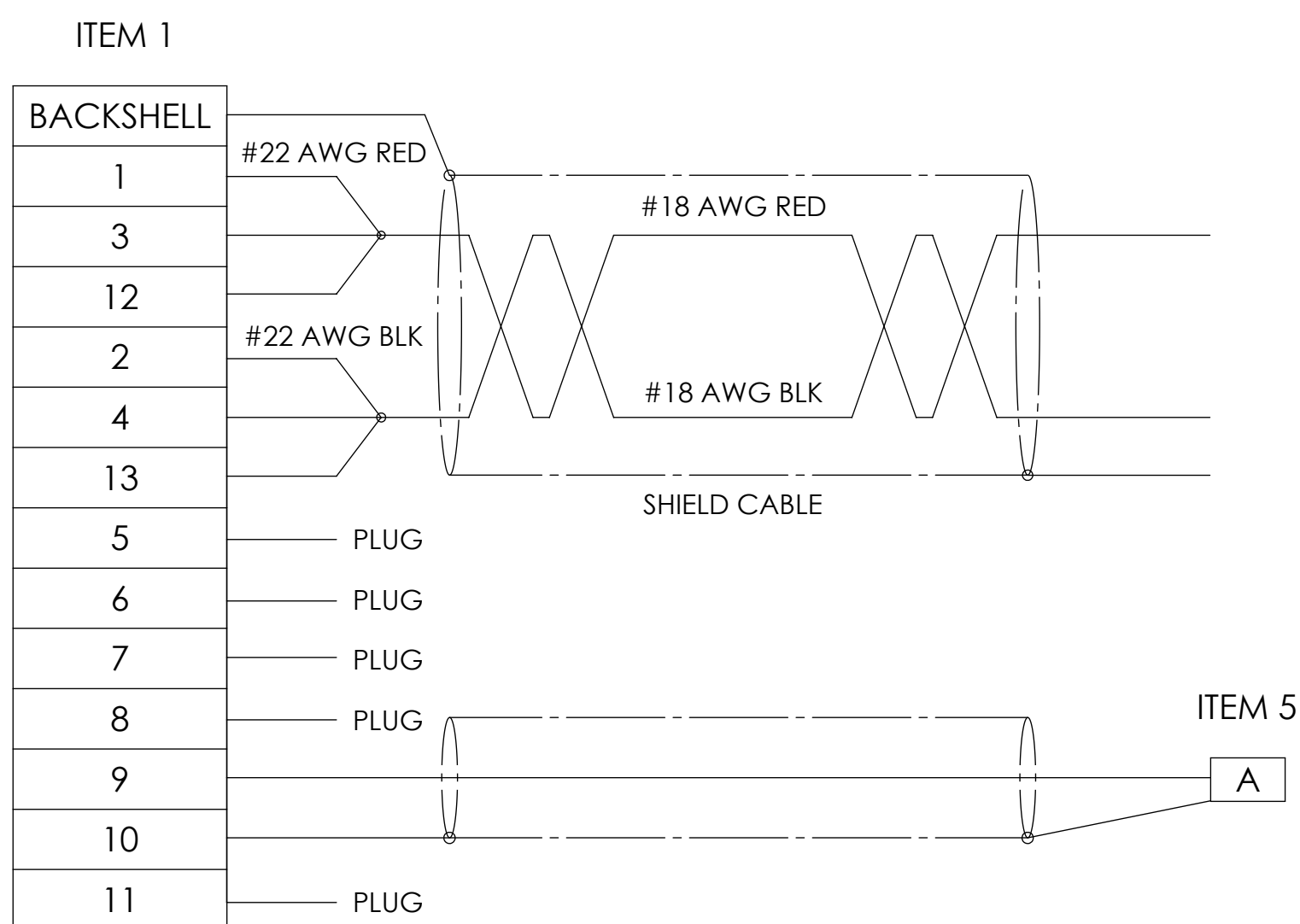
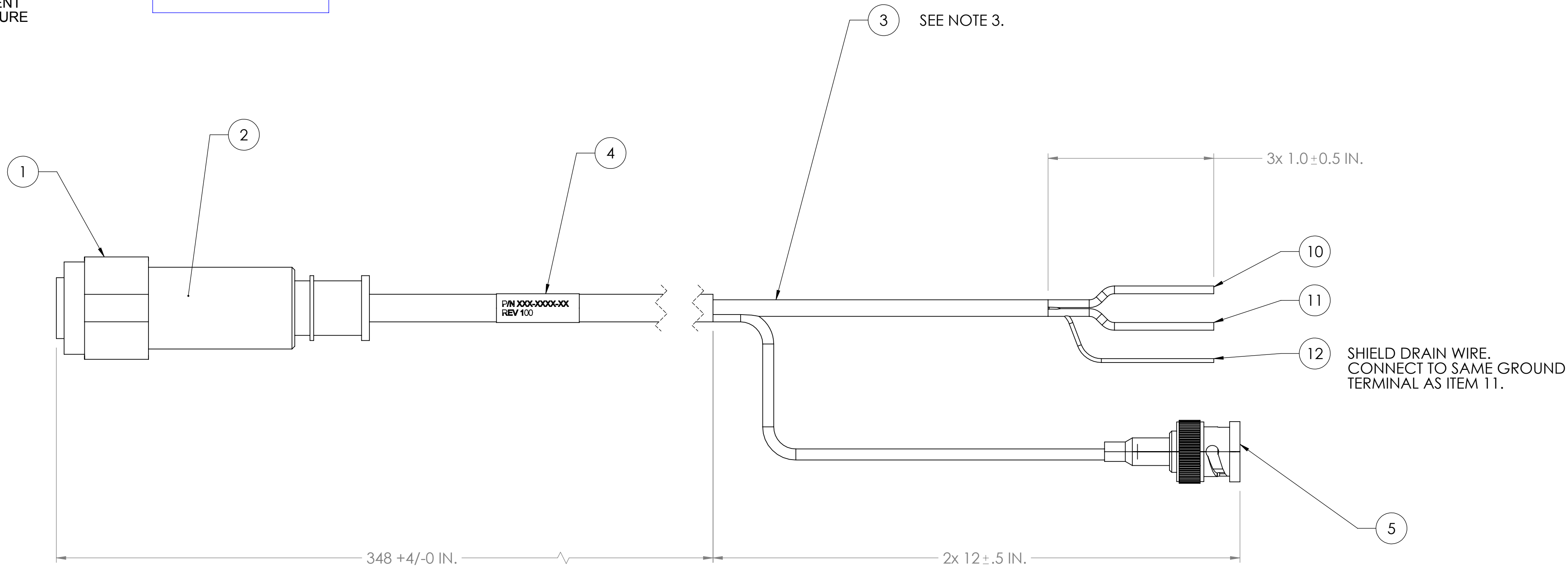
NOTES: UNLESS OTHERWISE SPECIFIED.

- COMPONENTS CAN BE REPLACED BY EQUIVALENT SOURCE.
- USE MANUFACTURER'S SPECIFICATION FOR CONNECTOR ASSEMBLY AS APPROPRIATE. REFERENCE: ITT-CANNON MIL-DTL-38999 CATALOG, MIL-C-39029 CONTACT, MIL-I-81969 APPLICATION TOOL, MIL-STD 1560 INSERT ARRANGEMENT
- CABLE ASSEMBLY SHALL MEET FAR-25 FOR ABRASION, SMOKE, FLAME RETARDENCY, ETC. MATERIAL FUNCTIONAL TEMPERATURE -40/+80 DEG C.
- PLACE LABELS WHERE INDICATED WITHIN (2) INCHES OF CONNECTOR. MARK P/N AND CURRENT REVISION USING FONT SIZE (14) OR GREATER IN CONTRASTING COLOR. LABELS WITH PRESSURE SENSITIVE ADHESIVE ARE ACCEPTABLE.
- REFER TO YOUR AIRCRAFT'S FLIGHT MANUAL, FLIGHT MANUAL SUPPLEMENT, STC DOCUMENTATION, OR OTHER FIELD APPROVAL FOR MORE DETAILED INSTALLATION INSTRUCTIONS, IF APPLICABLE.
- DRAWING NOT TO SCALE.

LABEL FORMAT:
 XXX = REVISION LEVEL
 YY = YEAR
 WW = WORK WEEK

308-0147-00
 REV XXX
 YYWW

REVISIONS				
ZONE	REV	DESCRIPTION	DATE	APPROVED
	101	INITIAL RELEASE	11/20/2007	MK



SCHEMATIC DIAGRAM

TABLE 1. WIRING DIAGRAM

ITEM #	SIGNAL NAME	PIN #	WIRE COLOR	WIRE MATERIAL	CONSTRUCTION	ITEM #	PIN #	NOTE
1	POWER 2	1	RD	22G STRANDED,	JOINED, TWISTED PAIR, 18G, SEE NOTE	10	FLYING LEAD	THREE PINS (1,3,12) JOINED WITHIN ITEM 2 INTO SINGLE RED 18G STRANDED TEFLON JACKET CABLE.
	POWER	3	RD	TEFLON JACKET. SEE NOTE.				
	POWER, HEATER	12	RD					
	POWER GND 2	2	BK	22G STRANDED,				
	POWER GND	4	BK	TEFLON JACKET. SEE NOTE.				
	POWER GND, HEATER	13	BK					
	PLUG	5	-	-	-	-	-	-
	PLUG	6	-	-	-	-	-	-
	PLUG	7	-	-	-	-	-	-
	PLUG	8	-	-	-	-	-	-
	VIDEO GND	10	-	-	MIL-RG179	CO-AXIAL	5	SHIELD CENTER
VIDEO	9	-	-	-	-	-	-	-
PLUG	11	-	-	-	-	-	-	-
2	BACKSHELL	DRAIN	-	ALUMINUM MYLAR FOIL SHIELD, TIN COPPER BRAID, >82% COVERAGE.	JACKET	12	DRAIN	AT BRANCH, SHIELD SHALL FOLLOW POWER LEADS. DRAIN WIRE SHALL BE AVAILABLE AS FLYING LEAD AT POWER WIRES.

ITEM NO.	Number	Vendor	Description	QTY.
1	KJA6T11W35SN (FLIR 4107296)	ITT-CANNON	MIL-DTL-38999, 13 PIN, CIRCULAR	1
2	38999/26 B11 UNIVERSAL HEAT SHRINK	PEI-GENESIS	38999/26 B11 UNIVERSAL HEAT SHRINK	1
3	-	-	CABLE MATERIALS, SEE TABLE 1.	1
4	-	-	PART LABEL, EVS3	1
5	5413589-8	Tyco	BNC Crimp Plug for RG187 and CTL Cables, 75 Ohm	1

THIRD ANGLE PROJECTION

THIS DOCUMENT IS CONTROLLED TO FLIR TECHNOLOGY CONTROL LEVEL 1.

INFORMATION CONTAINED IN THIS DOCUMENT IS FLIR SYSTEMS, INC. PROPRIETARY. THIS DOCUMENT AND DATA DISCLOSED HEREIN OR HEREON IS NOT TO BE REPRODUCED, USED, OR DISCLOSED IN WHOLE OR IN PART TO ANYONE WITHOUT THE WRITTEN PERMISSION OF FLIR SYSTEMS, INC.

INTERPRET DRAWING PER ASME Y14.5M-1994	MATERIAL	PROJECT NO.	Indigo Operations 70 Castilian Drive Goleta, CA 93117
	FINISH	APPROVALS	DATE
UNLESS OTHERWISE SPECIFIED SURFACE ROUGHNESS 32 X = ±.1 .XX = ±.01 .XXX = ±.005 ANGULAR = ±.5° FILLET RADII = .005 MAX	UNLESS OTHERWISE SPECIFIED ALL MEASUREMENTS ARE IN INCHES. ALL DIMENSIONS IN [] ARE MM. DO NOT SCALE DRAWING.	DWN MKENT	08/01/07
		CHK	
		DSON MKENT	07/31/07
	ENG		
	APP		

TITLE: **CABLE ASSY, EXTERNAL ANALOG**

SIZE: D CAGE: 064Y2 DWG NO. **308-0147-00** REV: 101

SCALE: 3:2 PRINTED: 1/18/2008 SHEET: 1 OF 1

SOLIDWORKS MODEL: CABLE ASSY, EXTERNAL MODEL REVISION: 030